

Creating a Safe Workplace.

October is Safe Work Month

How can Employers Create a Safe Workplace?



Each year in Australia.



Fatalities.

- 198 workers are killed
 - 34% are vehicle incidents
 - 13% falls from height
 - 1/4 fatalities involved a truck



Injuries.

- 112,200 serious claims each year
 - 24% serious claims made by labourers
 - 16% muscular stress while lifting, carrying objects
 - 16% muscular stress while handling objects

What should you do?

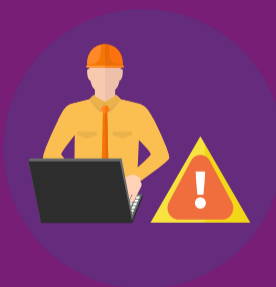


1. Identify Hazards.

What are the hazards that face your employees everyday? Remember, they may not always be obvious.

2. Assess Risks.

What is the likelihood that someone will be exposed to a hazard and what could happen if they are?

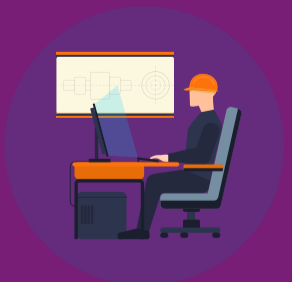


3. Control Risks.

Once the hazards and risks are identified, how can you fix them? Make the necessary changes.

4. Review Control Measures.

Creating a safe and healthy workplace never stops. Review and evaluate regularly and always try to improve.



References.

* Source: Safe Work Australia

<https://www.safeworkaustralia.gov.au/statistics-and-research/statistics/fatalities/fatality-statistics>
<https://www.safeworkaustralia.gov.au/statistics-and-research>